

*“ Every day, on every project, we are helping to create a more adaptive, resilient, and sustainable world. ”*

## Restoring coastlines and protecting homes

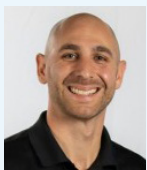
SumCo Eco-Contracting is devoted to the specialized field of ecological construction. We provide nature-based solutions for erosion control and the restoration of coastlines for beachfront property owners.

Coastal protection has been around for many decades. It is not a new concept. What is new, however, are the types of solutions that are now allowed by regulatory authorities. These changes reflect the growing need for coastal protection due to climate change. The rise in sea levels are threatening an increasing number of properties in coastal environments.

Research has suggested that the concept of “hard” coastal bank protection (e.g., rock revetments, concrete or sheetpile seawalls) actually increases the rate of beach erosion. Storm-driven waves and surf hit the hard structures and reflect back towards the ocean, removing beach sand in the process. Such research has led to the creation of the field of “soft” structures. The advantage of a soft structure is that they absorb the impact of storm-driven waves. This reduces the degree of wave reflection and thus beach erosion. Regulatory authorities prefer soft structures in most situations due to the reduced rate of beach erosion. The first such installations were in Nantucket, MA back in the 1990’s, and have expanded from there to other parts of New England and along the coast. SumCo is proud to deliver the latest (soft) techniques in stabilization and storm resistance, including:

- Annual sand nourishment of beaches and dunes that lose sand due to winter storm erosion
- Coir fiber rolls, sand filled coir envelopes
- Permeable gabion structures
- Elcorock geotube pillows that are permeable but non-bio-degradable
- Sand drift fencing to accrete wind-blown sand

### CONTACT OUR EXPERIENCED COASTAL TEAM TODAY: (978) 744-1515



**Michael Bonner**  
mbonner@sumcoeco.com



**Jonathan Gawrys**  
jgawrys@sumcoeco.com



**Dave Lager**  
dlager@sumcoeco.com



[www.sumcoeco.com](http://www.sumcoeco.com)

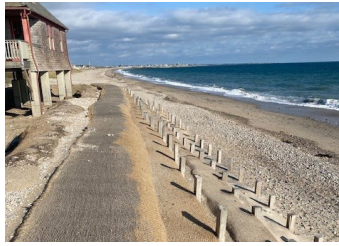






### Heavy Duty Sand Drift Fence – Cape Cod, MA

The purpose of the sand drift fence is to accumulate wind-blown sand to naturally rebuild/renourish a dune or the toe of a coastal bank. A “heavy duty sand drift fence” is for locations where waves and surf are particularly intense, and therefore the fence has to be designed to withstand such forces during storm season (winter & early spring). Subsequently, during the non-storm seasons (late spring, summer and fall), the fence can resume its role in naturally accreting sand for restoring/expanding a dune at the toe of a coastal bank.



### Coir Logs – Johnstown, RI

This shoreline was stabilized using a coir fiber roll installation along the top of the coastal bank. The coir fiber rolls would then absorb and dissipate wave action in order to reduce coastal erosion during severe storms.



### Coir Fiber Roll Installation – Nantucket, MA

This installation highlights Coir envelopes stacked in an array with posts to help keep them in place. Coir envelopes at this location were the only protection allowed due to dune protections. Dunes under the Wetland Act are meant to furnish sand to the near shore ocean environment. This regulation dictates that coastal protection is limited to “soft” structures in this situation vs a rock revetment (“hard” structure).



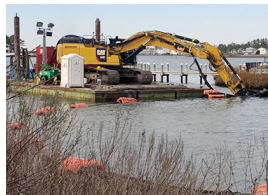
### Elcorock Geo Tubes – Plymouth, MA

The coastal bank protection in this photo is a hybrid “soft” structure. Elcorock tubes are sand filled “pillows” stacked in a terrace configuration going up the coastal bank. Instead of a biodegradable coir material, the pillow is made of geotextile, a non-biodegradable material which has a greater life expectancy and durability. The entire installation is covered with sand and planted with beach grass for a natural coastal bank appearance.

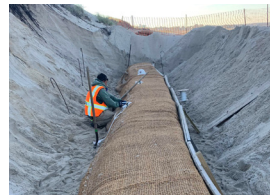
## Other Projects



**Dune Re-Nourishment**  
Duxbury, MA



**Whitcreek Hydraulic Dredging & Beneficial Use**  
Sussex County, DE



**Coir Envelopes**  
Sandwich, MA



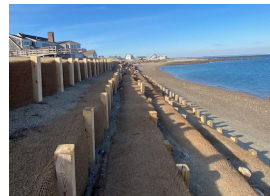
**Beach Access Stair Set**  
Truro, MA



**Coir Envelopes**  
Nantucket, MA



**Coir Fiber Rolls & Netting**  
Nantucket, MA



**Coir Envelopes**  
Sandwich, MA



**Maushop Village Beach Nourishment**  
Mashpee, MA

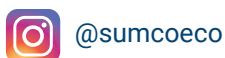
## Contact

2 Centennial Drive, Suite 4D, Peabody, MA 01960  
**CONTACT OUR EXPERIENCED COASTAL TEAM TODAY:**  
**(978) 744-1515**

**Michael Bonner:** mbonner@sumcoeco.com  
**Jonathan Gawrys:** jgawrys@sumcoeco.com  
**Dave Lager:** dlager@sumcoeco.com



www.sumcoeco.com



## Our Full List of Services



**Ecosystem Restoration & Mitigation**  
Freshwater Wetlands  
Salt Marshes  
Cranberry Bog Restoration  
Lakes & Ponds  
Upland Forest & Grasslands



**Dam Removal & River Restoration**  
Fish Passage  
Bank Stabilization  
Stream Restoration



**Coastal Stabilization**  
Living Shorelines  
Bioengineered Solutions  
Dune Restoration  
& Beach Nourishment  
Sea Walls & Revetments



**Infrastructure & Resiliency**  
Dam Rehabilitation  
Culverts & Bridges  
Flood Control  
Site Development  
Green Infrastructure  
Stormwater Systems



**Dredging & Marine Construction**  
Hydraulic & Mechanical  
Dredging  
Beneficial Use of  
Dredge Materials  
Subtidal Infrastructure  
Jetties, Piers, & Bulkheads  
CDF Infrastructure



**Parks & Open Spaces**  
Landscape Installation  
Golf Course Water Features  
Boardwalks & Bridges  
Trails & Public Access  
Water Access/Boat Ramps



**Native Plant Communities**  
Planting & Site Restoration  
Seeding  
Invasive Species  
Management



**Remediation**  
Contaminated Soils  
Soil Treatment & Disposal  
Brownfield Redevelopment



**Service areas:**  
**From Maine to**  
**Virginia**